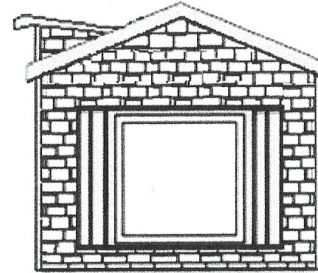
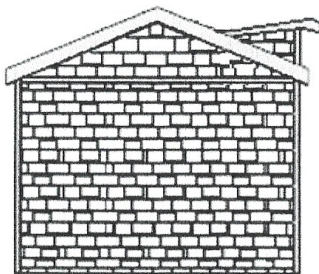


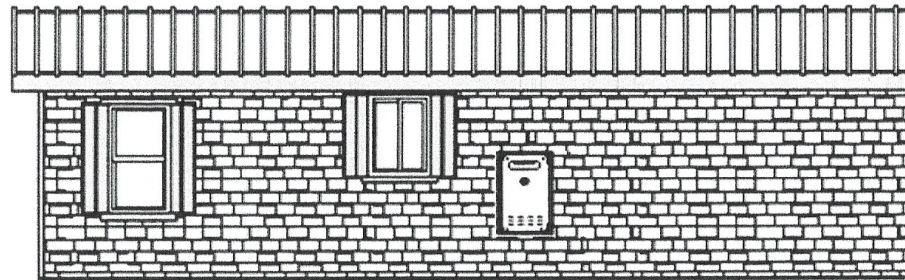
LEFT



FRONT



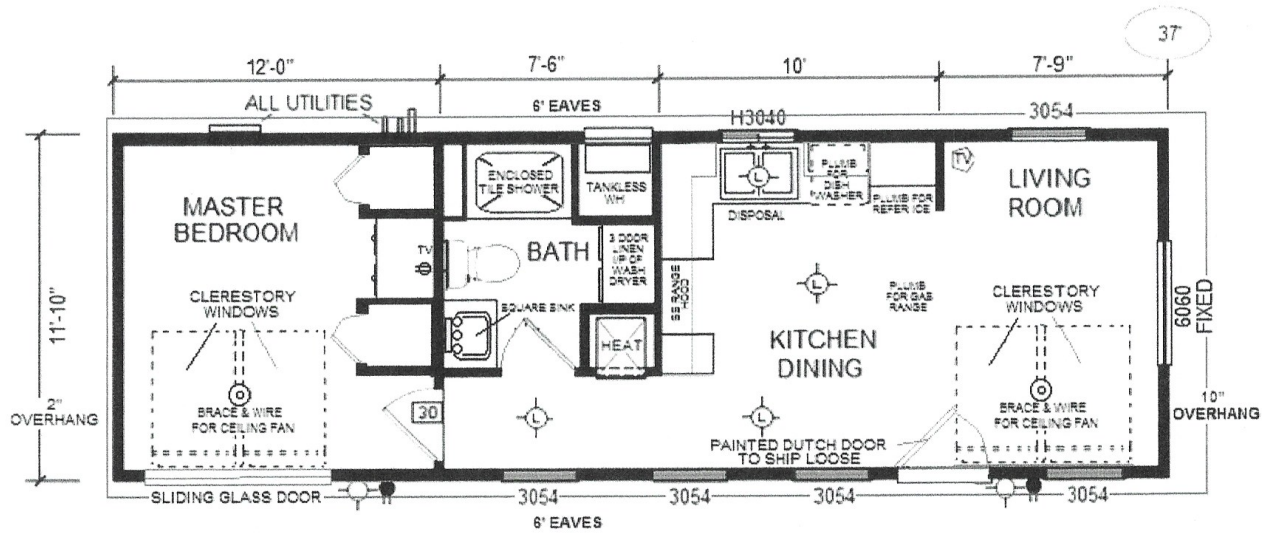
REAR



RIGHT

ARENSEN ADU PROTOTYPE #1

 CHAMPION <small>MANUFACTURED HOMES</small> 299 N. Smith Ave., Corona CA 92680	APPROVER'S SEAL	MODIFICATIONS	MODEL 4031H (BD-80 SP) <small>36-011-10-1BR</small>	SHEET NO. AE-101
	<small>PROPRIETARY AND CONFIDENTIAL THESE DRAWINGS AND SPECIFICATIONS ARE ORIGINAL PROPRIETARY AND CONFIDENTIAL MATERIALS OF CHAMPION HOME BUILDERS, INC. COPYRIGHT © 1976-2017 BY CHAMPION</small>			TITLE ELEVATIONS
			DATE: 11-27-17	SCALE: 1/8" = 1'-0"
			DRAWN BY: AGOMEZ	CHECKED BY:
			FILENAME: 4031H-LT101	



4031H (BD-80 SP) 438 SQ. FT. 37'-0 x 11'-10"

- 2 x 4 EXTERIOR WALLS
- 90' SIDEWALLS

ARENDSSEN ADU PROTOTYPE #1

 299 N. Smith Ave., Corona CA 92680 <small>PROPRIETARY AND CONFIDENTIAL THESE DRAWINGS AND SPECIFICATIONS ARE ORIGINAL PROPRIETARY AND CONFIDENTIAL MATERIALS OF CHAMPION HOME EVALUERS INC. COPYRIGHT © 1978-2017 BY CHAMPION</small>	APPROVER'S SEAL	MODIFICATIONS	MODEL 4031H (BD-80 SP) 38-0/11-10-1BR	SHEET NO
			TITLE: LITERATURE PLAN	LT-101
			DATE: 11-27-17	SCALE: 3/16" = 1'-0"
			DRAWN BY: AGOMEZ	CHECKED BY:
			FILENAME 4031H-LT101	PAGE 1 OF 4