



CREST BACKYARD HOMES

**ADU**  
SPECIALIST

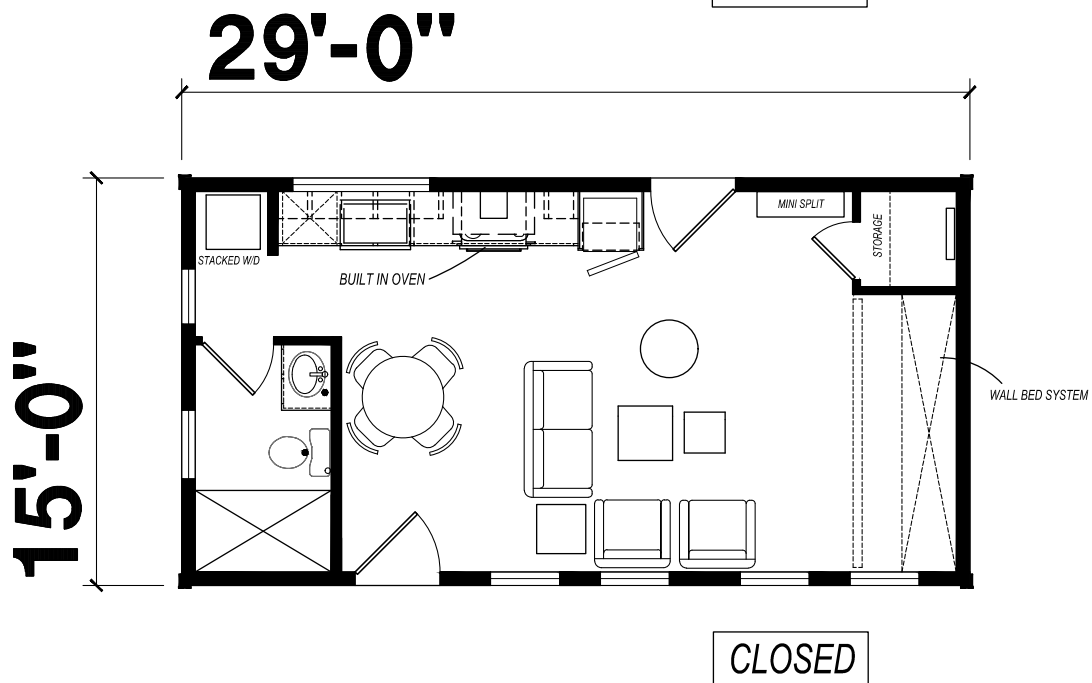
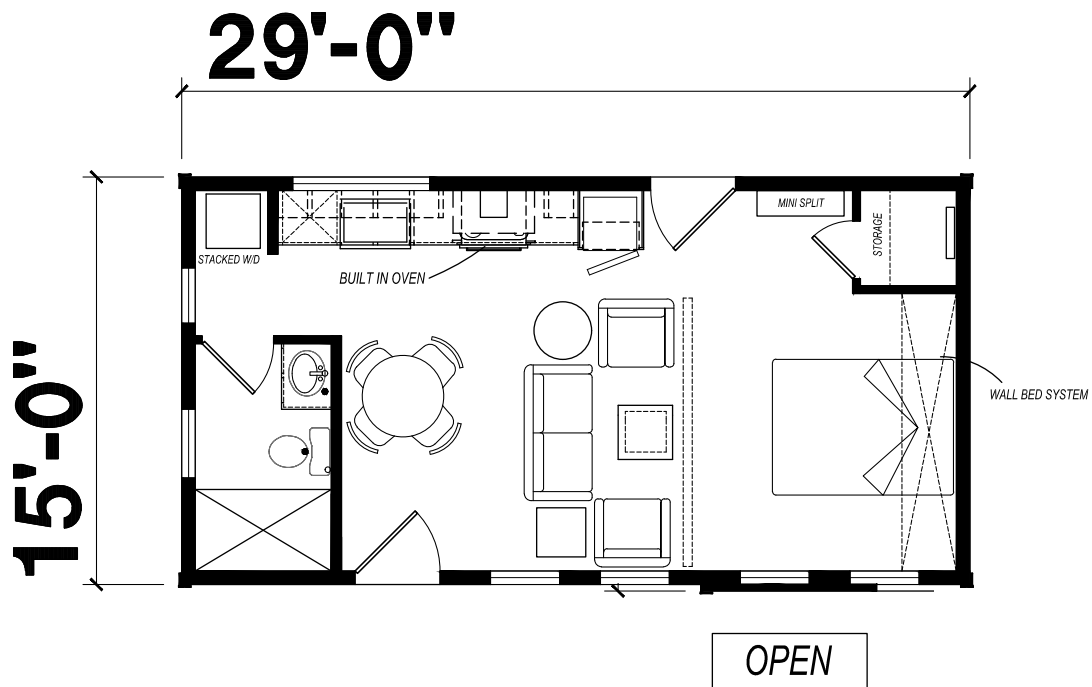


# URBANLINE ADU MODELS

# URBANLINE

435 **ADU**  
MODEL 1629H11G01

1 BED-1 BATH  
435 SQ. FT.



Due to continuous product development and improvement, prices, specifications, and materials are subject to change without notice or obligation. Square footage and other dimensions are approximate. Exterior images may be artist renderings and are not intended to be an accurate representation of the home. Renderings, photos and floor plans may be shown with optional features or third-party additions. Some floorplan dimensions vary by manufacturing center. Ask your local manufacturing center for details.

# URBANLINE

## 510ADU

MODEL1634H11G01

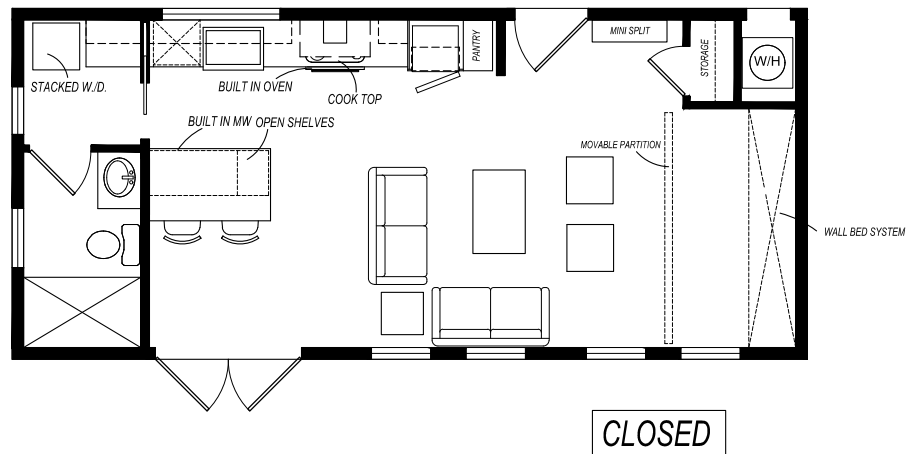
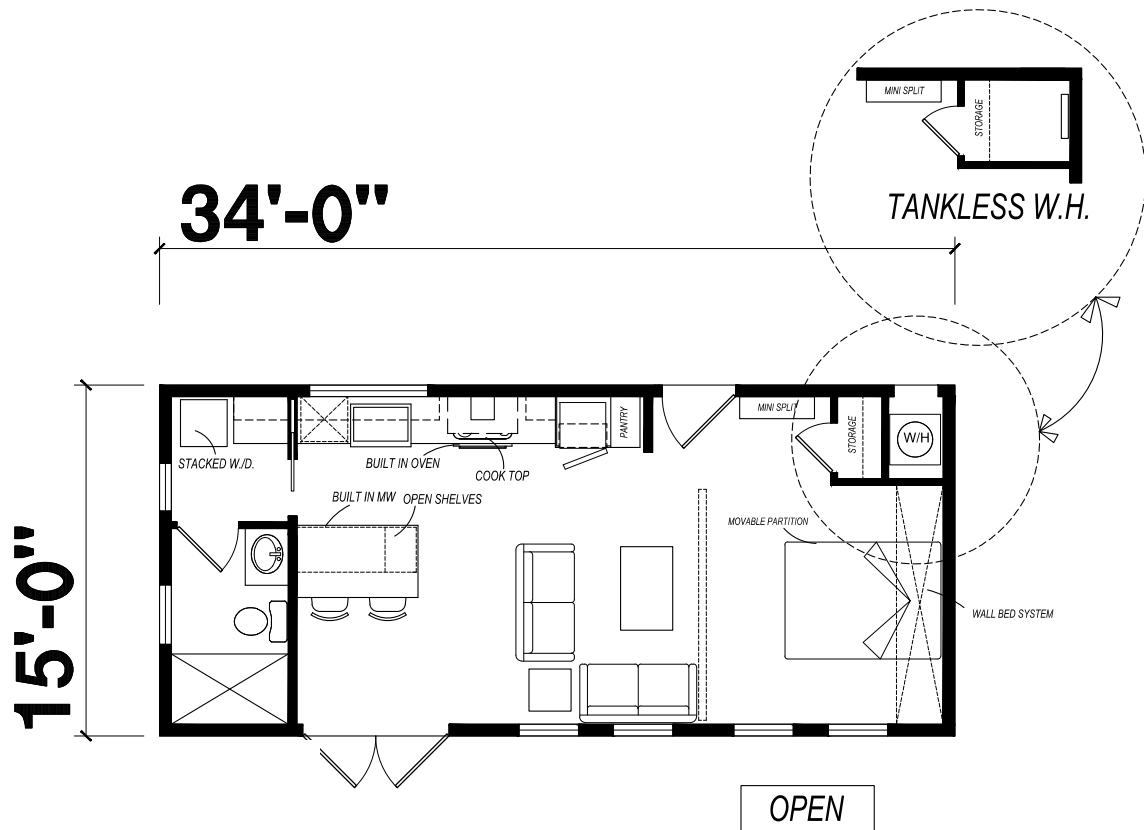


# URBANLINE

510 **ADU**

MODEL 1634H11G01

1 BED-1 BATH  
510 SQ. FT.



Due to continuous product development and improvement, prices, specifications, and materials are subject to change without notice or obligation. Square footage and other dimensions are approximate. Exterior images may be artist renderings and are not intended to be an accurate representation of the home. Renderings, photos and floor plans may be shown with optional features or third-party additions. Some floorplan dimensions vary by manufacturing center. Ask your local manufacturing center for details.





Dollhouse View of Urbanline ADU 790 Factory Display



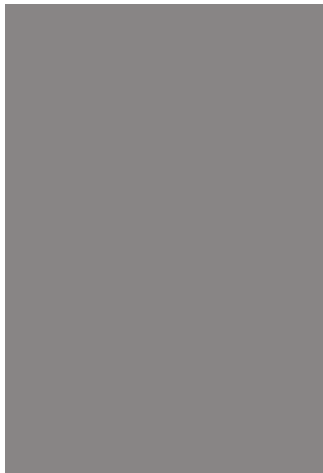
# Floor Plan of Urbanline ADU 790 Factory Display



Great Room



Great Room



Genesis Kitchen



Master Bedroom







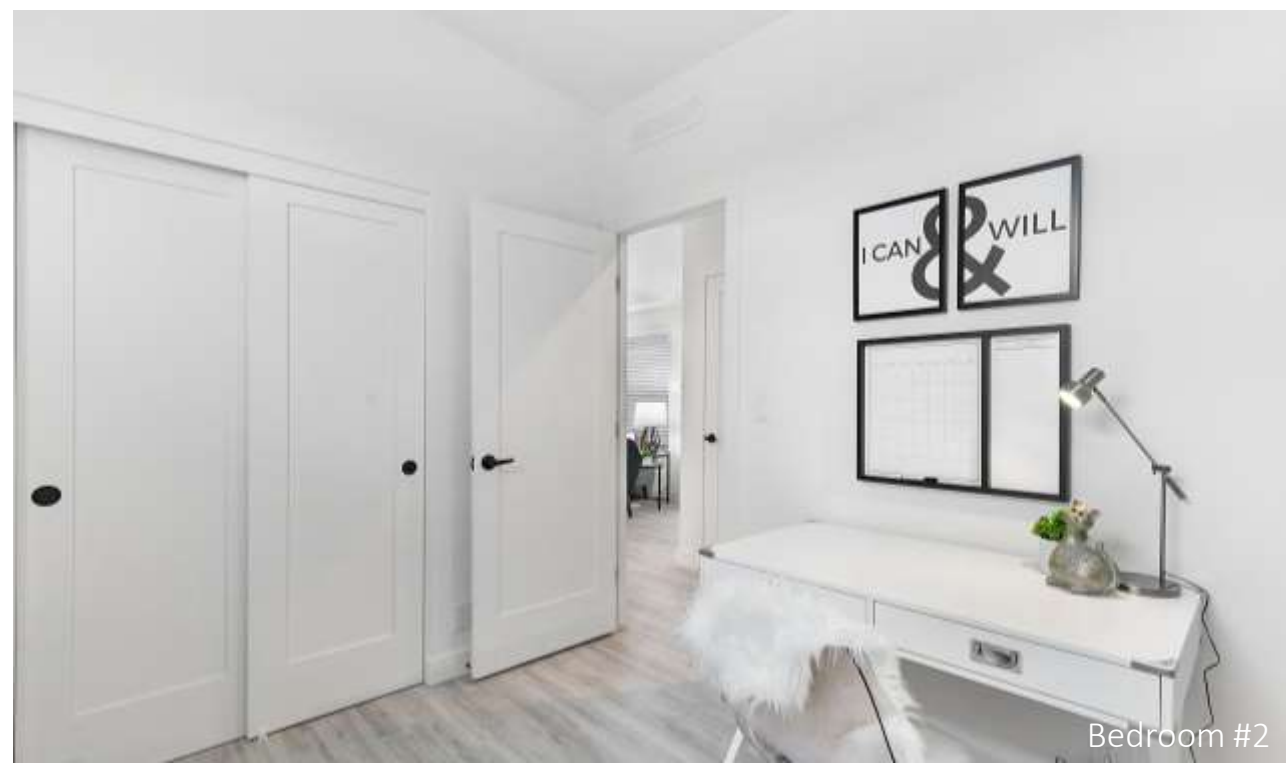
Master Bath



Master Bath



Bedroom #2



Bedroom #2

# URBANLINE BY CRESTLINE

## STANDARD FEATURES

### INTERIOR FEATURES

- 8' Flat interior ceilings throughout
- ½" drywall on walls with square corners
- Orange peel-style textured finish on walls & ceilings
- White walls standard
- Two-panel passage & wardrobe doors throughout
- Dramatic sculptured passage door moldings
- 3 1/4" sculptured floor moldings throughout  
*(optional 5 ¼" also available!)*
- (3) mortised hinges on passage doors
- Lever-style passage door locksets – satin nickel finish
- Hand-finished wood cabinets throughout with solid end panel construction
- Soft-close hidden hinges on cabinet doors
- Side-mounted metal drawer guides
- Rocker-style light switches with matching style wall outlets
- All copper wiring throughout
- Metal water shutoff valves at all fixtures
- 2" white faux wood blinds with matching wood valance  
*(excluding stacked windows)*
- Plumb/wire for washer & dryer
- USB receptacle in kitchen area
- White wood window casings throughout (except shower area)

### KITCHEN

- Whirlpool® white finished kitchen appliances
- 30" gas freestanding range
- 18 cubic foot double door refrigerator
- Moen® chrome dual-handle faucet with Manufacturers Limited Lifetime Warranty on finish & parts
- Adjustable shelves in overhead cabinets finished with white lined cabinet interiors
- 8" deep stainless steel self-rimming sink
- Crown molding on all overhead cabinets
- Toe-kick heat register in base cabinets (per plan)
- Corian® finish countertops with 4" backsplash, 2" front drop edge

### LIGHTING

- Designer-selected lighting in designated areas
- Switched wall outlet for lamp lighting in living room and all bedrooms *(wall outlet designated by being installed upside down for easy identification)*
- LED can lights in kitchen (2), hall, utility & walk-in wardrobes

### MASTER BATH

- Designer-selected light fixture above sinks
- 60" one-piece fiberglass tub / shower
- Corian® counters with 4" backsplash
- Beveled-edge mirrored medicine cabinet
- China self-rimming sinks
- Satin nickel lighting fixtures
- Towel bar & paper holder – satin nickel finish
- Elongated low-flow water-saving toilets
- Moen® chrome dual-handle faucet with Manufacturers Limited Lifetime Warranty on finish & parts
- Moen® chrome tub/shower faucet featuring pressure balance valves to help prevent temperature variations, reducing the chance of scalding
- Ceiling vented exhaust fan
- "Easy Care" Shaw Beauflor vinyl floor covering

### FLOOR COVERINGS

- Group 1 Mohawk® carpet in living areas
- ½" rebond carpet pad
- "Easy Care" Shaw Beauflor vinyl flooring in kitchen, baths, utility, nook & dining areas (per plan)
- Vinyl entry floor

# STANDARD FEATURES *(continued)*

## CONSTRUCTION AND SPECIFICATIONS

- California CARB II compliant home
- Includes Silvercrest's "Silvershield" Seven-Year Warranty
- o NOW ALSO INCLUDES STRUCTURAL COVERAGE!
- (Deductibles apply, claims processed by Cornerstone United Insurance Company)
- 20 lb. roof load
- Insulation
  - o Floor R-11
  - o Walls R-13
  - o Ceilings R-22
- All structural lumber used is kiln-dried for higher quality
- 2" x 6" transverse floor joists – 16" on center
- 2" x 4" exterior wall studding – 16" on center
- White vinyl framed, dual glazed windows with low-e coating for energy savings – windows are Energy Star® rated & approved
- PEX water lines
- Water shut-off valves at all sinks & toilets
- 5/8" fire rated drywall ceilings
- ½" drywall on all interior walls
- ¾" OSB floor decking
- 96" sidewall height – per plan
- 100 amp electrical service
- 30-gallon gas water heater
- Gas down-flow furnace with manual thermostat
- Steel outriggers on all exterior walls for support

## EXTERIOR

- Semi-gloss exterior paint featuring high-quality PPG paint
- Class "A" fire-rated architectural shingles with Manufacturers 30-Year Limited Warranty
- High wind nailing pattern on all shingles (6 nails per shingles vs. 4 staples from other manufacturers)
- (2) exterior GFI protected patio outlets (locations vary per plan)
- 16" front overhang
- Sidewall eaves per plan (construction modifications can affect standard eave design)
- Craftsman-style shutters (per plan)
- Six-panel 36" fiberglass insulated entry door with deadbolt security lock
- Six-panel 32" fiberglass insulated rear entry door with deadbolt security lock
- All exterior doors with deadbolts feature a metal plate on door jam for added security
- Name brand fiber-cement exterior siding materials with Manufacturers 25-Year Limited Warranty
- 8" hardboard fascia & 4" hardboard corner & window trim

## SILVERCREST "SMART CHOICE" OPTIONS FOR YOUR "SMART DESIGN" HOMES

- 2'x6' exterior wall studding with R-19 insulation for additional energy savings
  - Energy-saving tankless gas water heater by Noritz®
  - Reflective roof sheathing for a cooler roof attic area – saving you money on heating & cooling costs
  - Tubular skylights that light home interiors without lighting during daylight hours saving energy
  - Prep raceways for wall mount flat screen television
  - WUI compliant structural package for homes located in California
  - Whirlpool® Kitchen Appliance Package
  - Fire sprinkler system
  - Additional LED can lights
  - Optional dimmer switches on LED can lights
- And much, much more!**



# OPTIONAL FEATURES

## EXTERIOR / CONSTRUCTION

Imperial Marquee Awning from General Awnings

Complete Box-Out Window in the Great Room

Additional Soffits in Kitchen

Service Mounted Electrical Main Panel

Natural Gas Tankless Water Heater

Hose Bibb

2x6 Exterior Walls

90" / 120" Sidewall Height – Interior Vault

9" Front & Rear Overhang

2 Window Clerestory in the Great Room

R-28 Roof Insulation

Board & Batten Exterior Accents

Genesis Trim & Fascia Package

Cement Lap Siding with Full Housewrap

K-25 Exterior Doors with Black Hardware

## BATHROOM

Bank of Drawers

Linen Cabinet with Laguna Cabinet Doors

Square Undermount Lavy Sink with Black Lavy Faucet

Hydroblok Tile Shower with Soap Dish and Black Barn Roller Shower Door

Dual Flush ADA Height Toilet

Black Base Cabinets

## KITCHEN

Broom Closet

Genesis Island

Increased Kitchen Cabinet Height (44 1/2" – *Genesis Kitchen Option Only*)

Stainless Steel Appliances (*Refrigerator, Cooktop, Oven, Range Hood*)

Full Height Backsplash to Bottom of Overhead Cabinets

½ HP Garbage Disposal

Stainless Steel Single Cell Undermount Sink with Black Kitchen Faucet

BlackBase Cabinets with White Overhead abinets

## FLOOR COVERING

Upgraded Plank Vinyl Flooring Throughout

## ADDITIONAL FEATURES

Digital Set Back Thermometer

Sprinkler System

A/C Ready Package

WUI Windows

Additional Windows (*See Plan*)

Upgraded Laguna Painted Cabinets with Black Euro Bar Hardware

Quartz Countertops

Additional 4" Can Lights

4" Flat Molding Baseboards & 3" Flat Molding Door Casings

Shaker 1-Panel Interior Doors with Black Hardware Throughout

Utility Room Door