

CREST BACKYARD HOMES

ADU FLOOR PLAN GUIDE



Contact:

johnarendsen@crestbackyardhomes.com

760- 815-6977

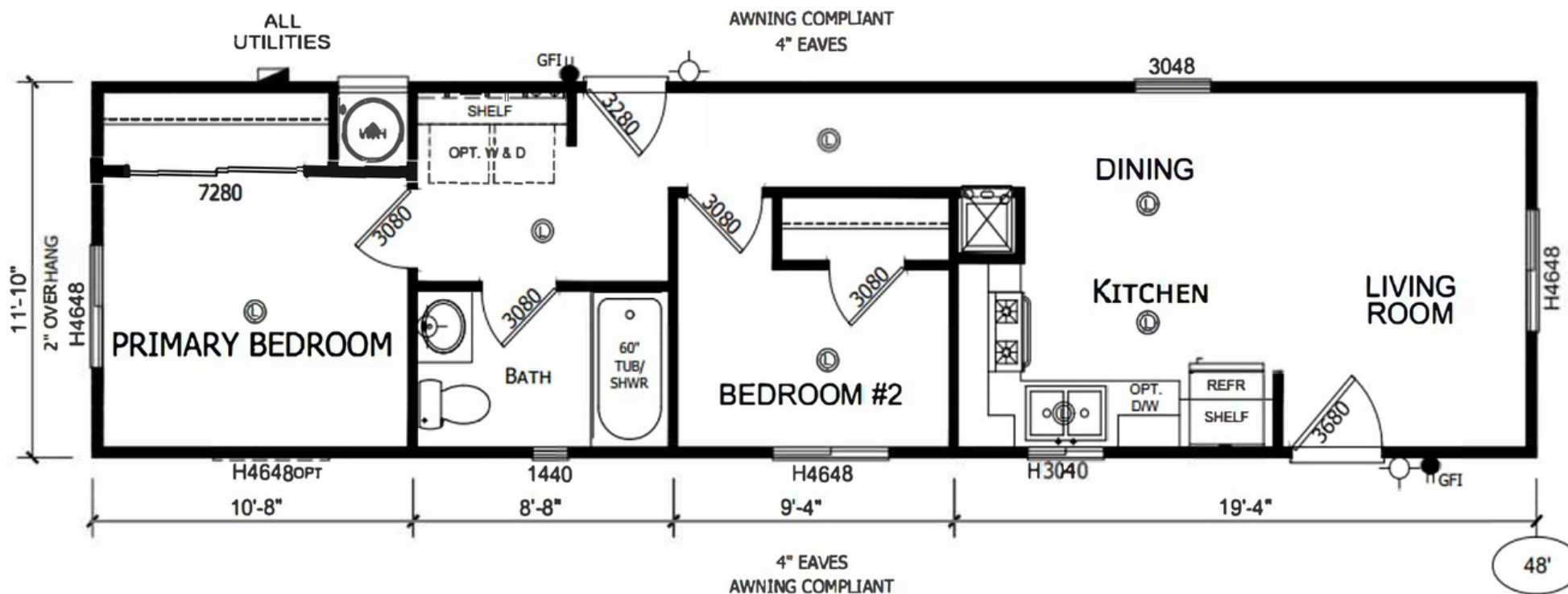


SUMMITLINE



\$150,725
48 x 12 - 568 sq ft
2bed / 1bath

SL 568

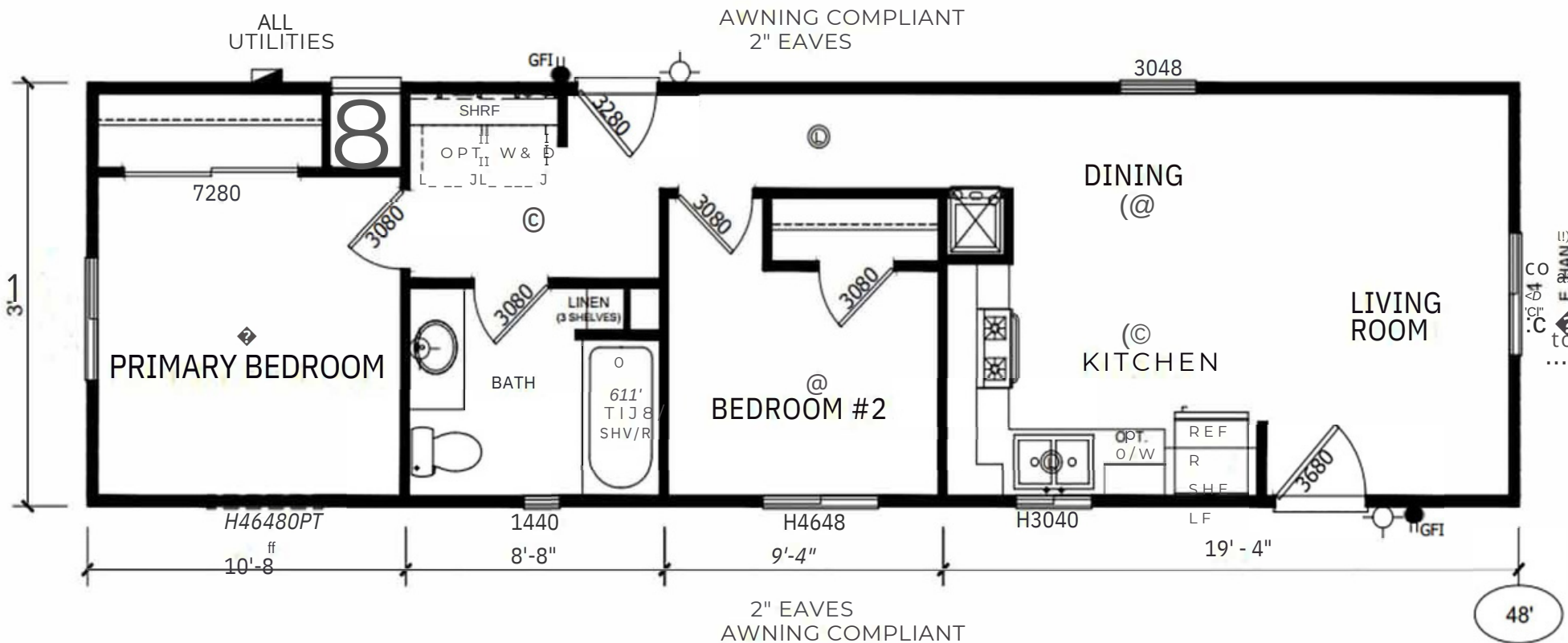


SUMMITLINE



SL 640

\$159,058
48 x 14 - 640 sq ft
2bed / 1bath



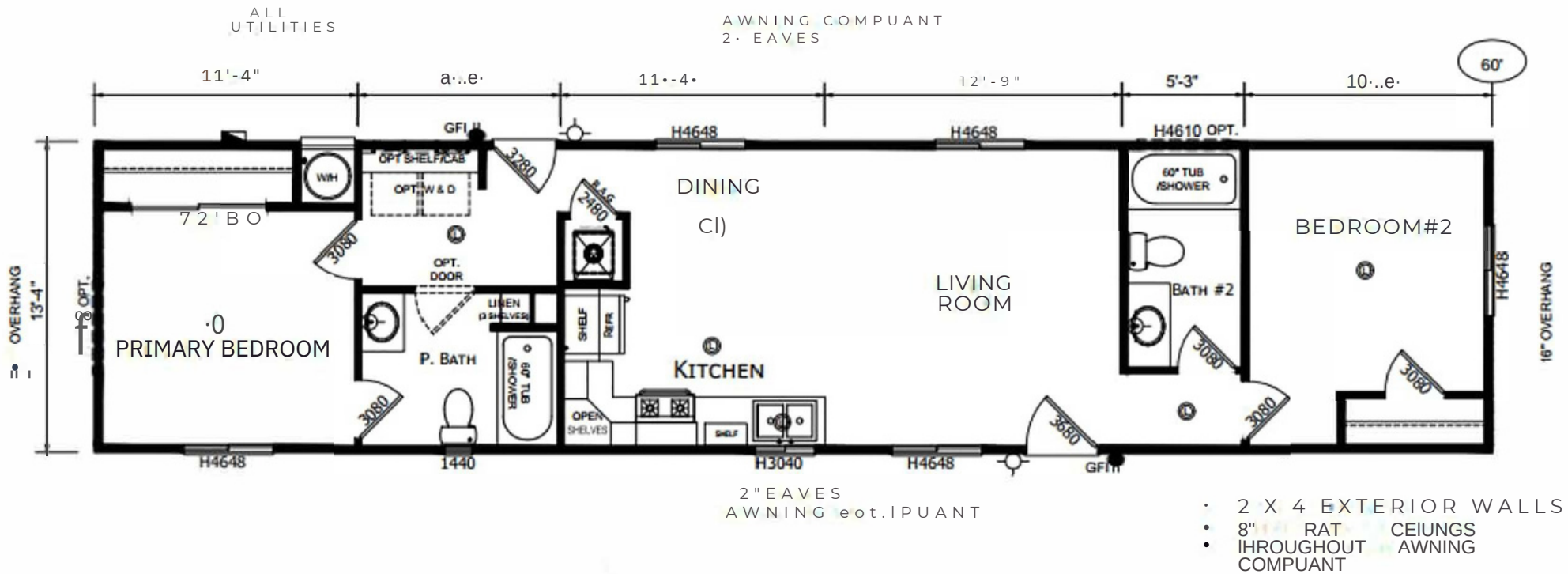
- 2 1/2 EXTERIOR WALLS
- 8' FLAT CEILINGS
- THROUGHOUT AWNING COMPLIANT

SUMMITLINE



SL 800

\$175,725
60 x 14 - 800 sq ft
2bed / 2bath

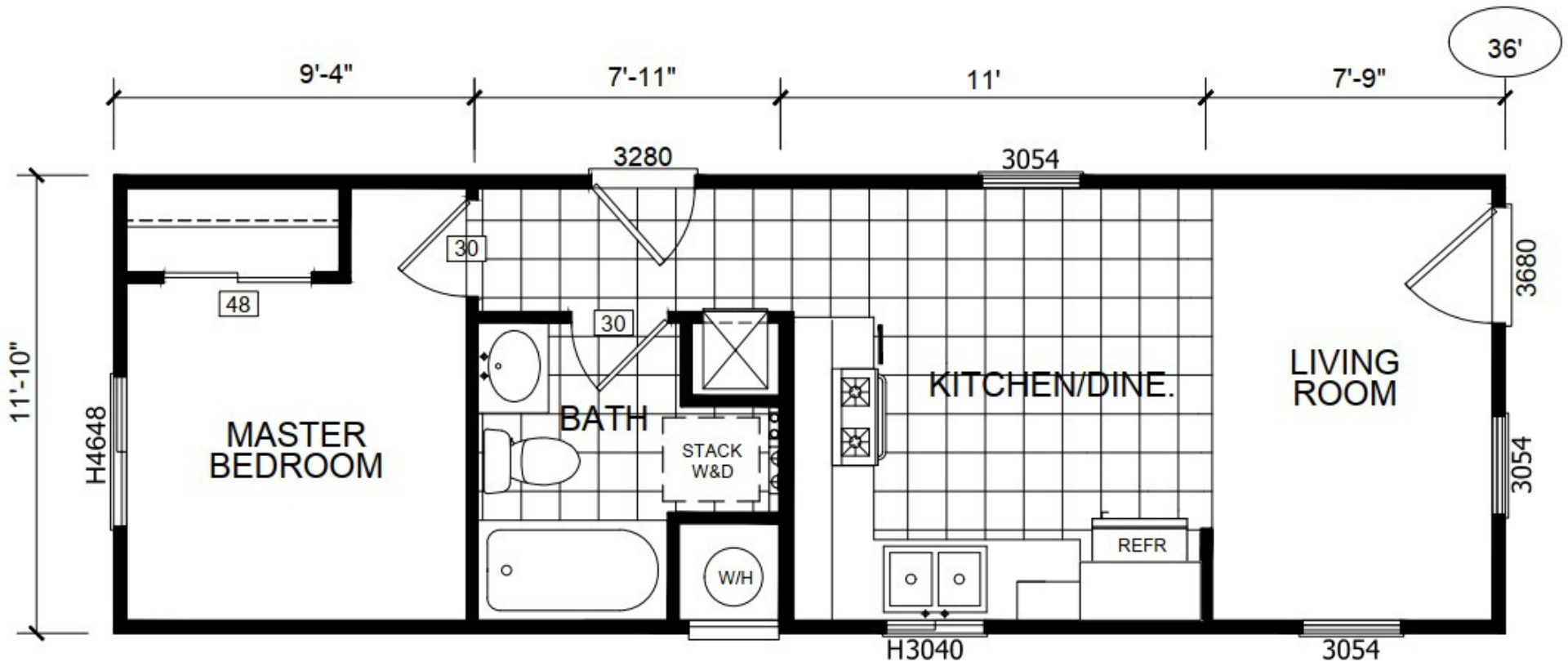


CRESTLINE



CL 426

\$177,391
36 x 12 - 426 sq ft
1bed / 1bath



CRESTLINE

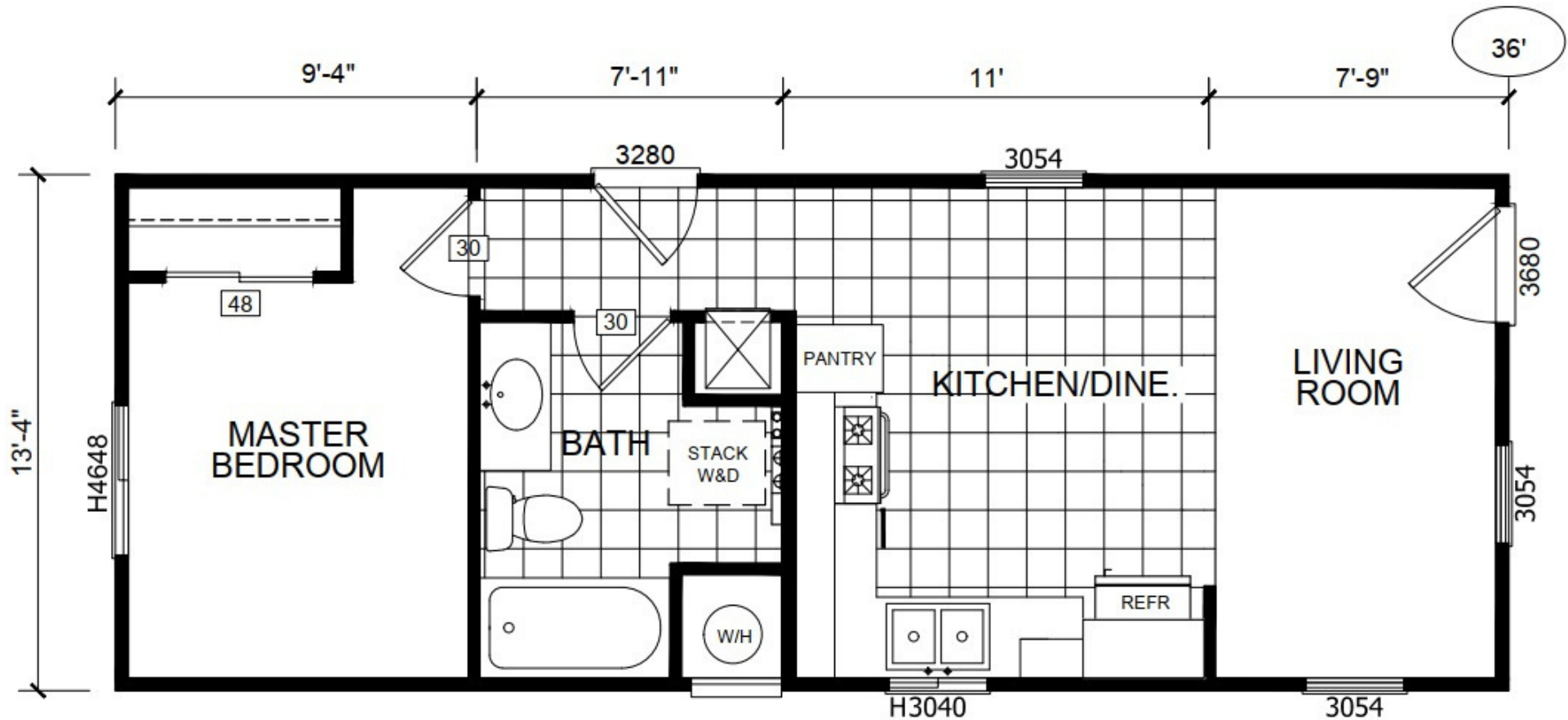
\$184,058

36 x 14 - 480 sq ft

1bed / 1bath



CL 480

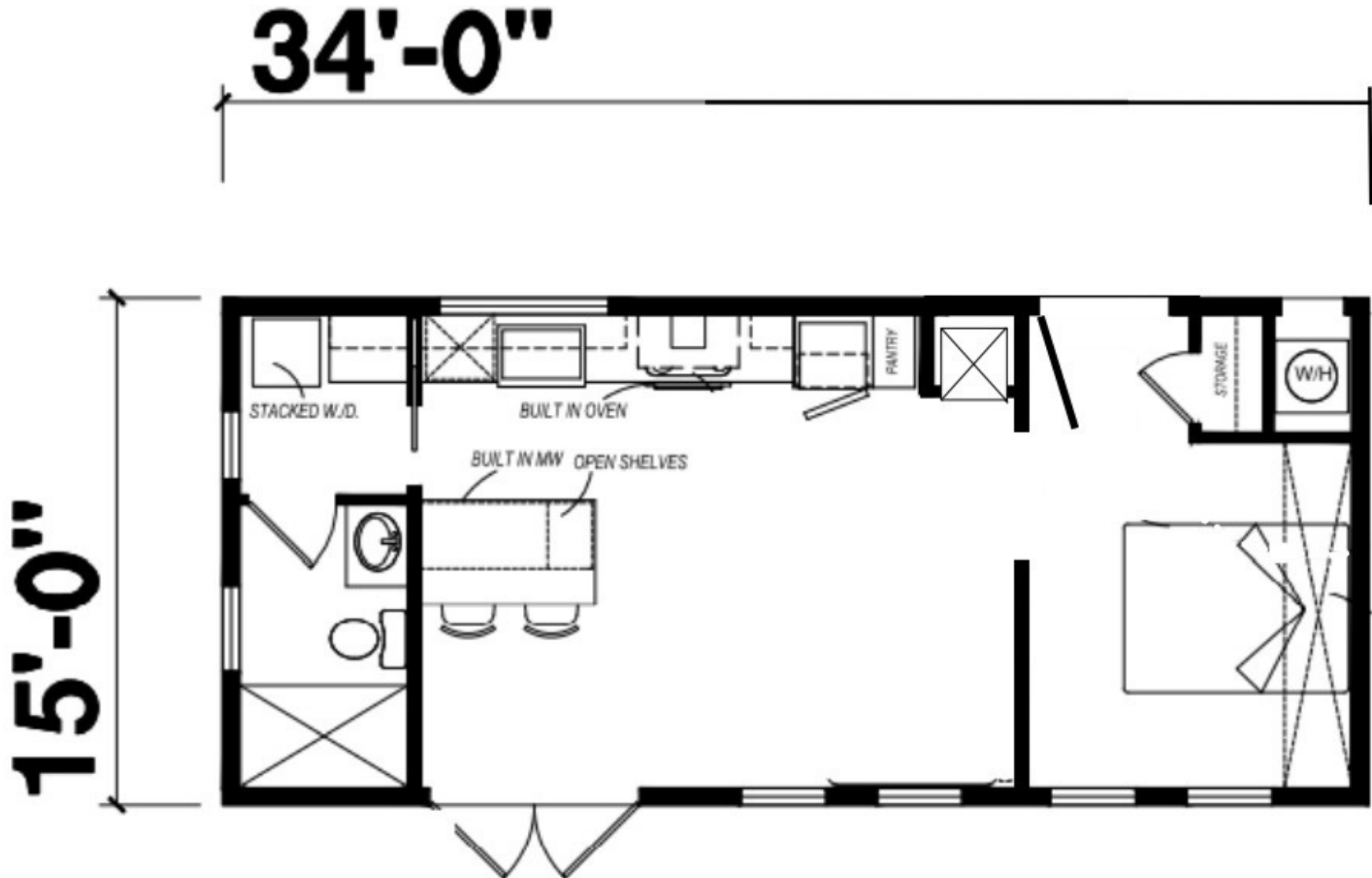


URBANLINE



\$184,058
34 x 15 - 510 sq ft
1bed / 1bath

UL 510



CRESTLINE

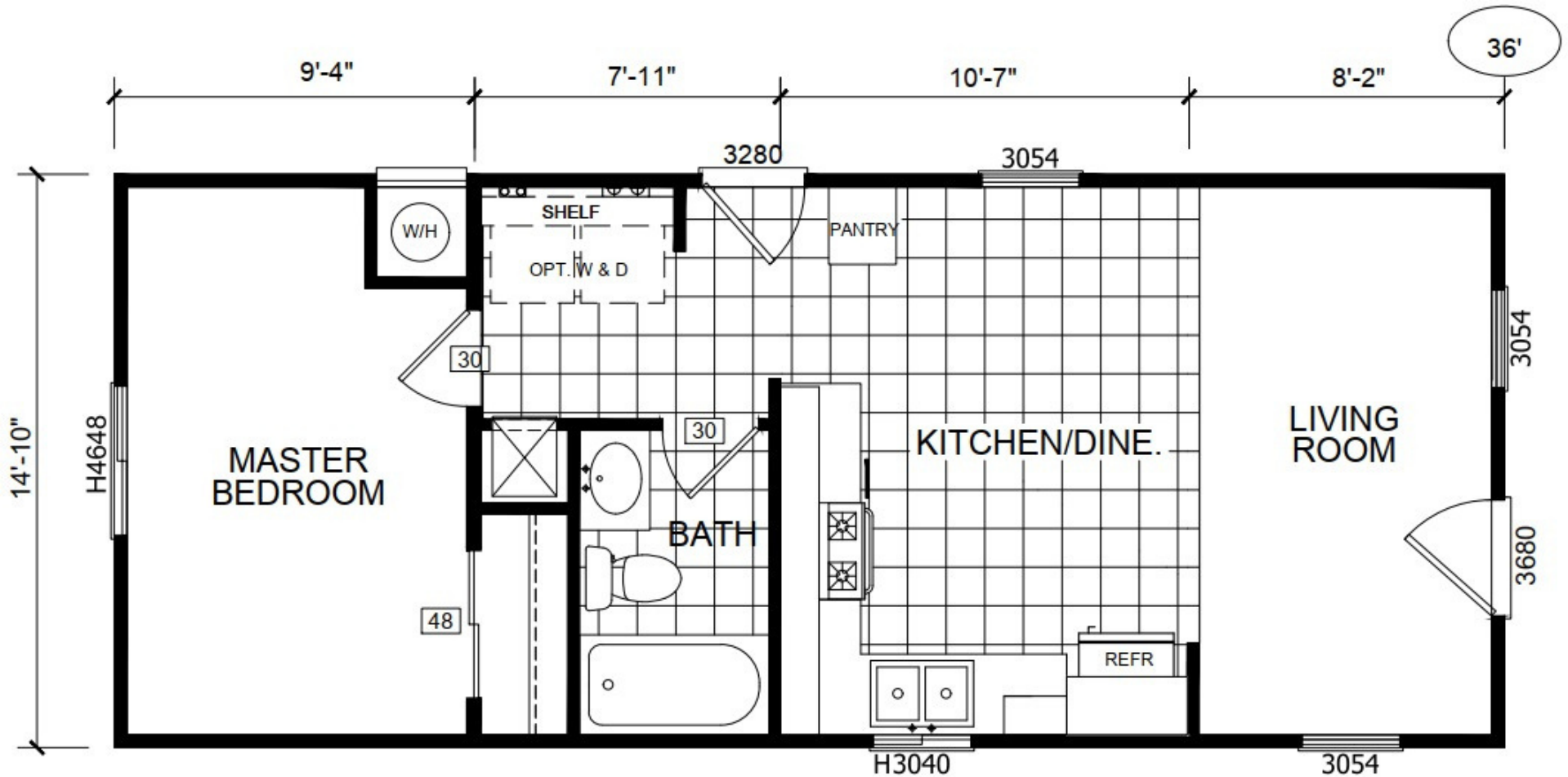
\$187,391

36 x 15 - 534 sq ft

1bed / 1bath



CL 534

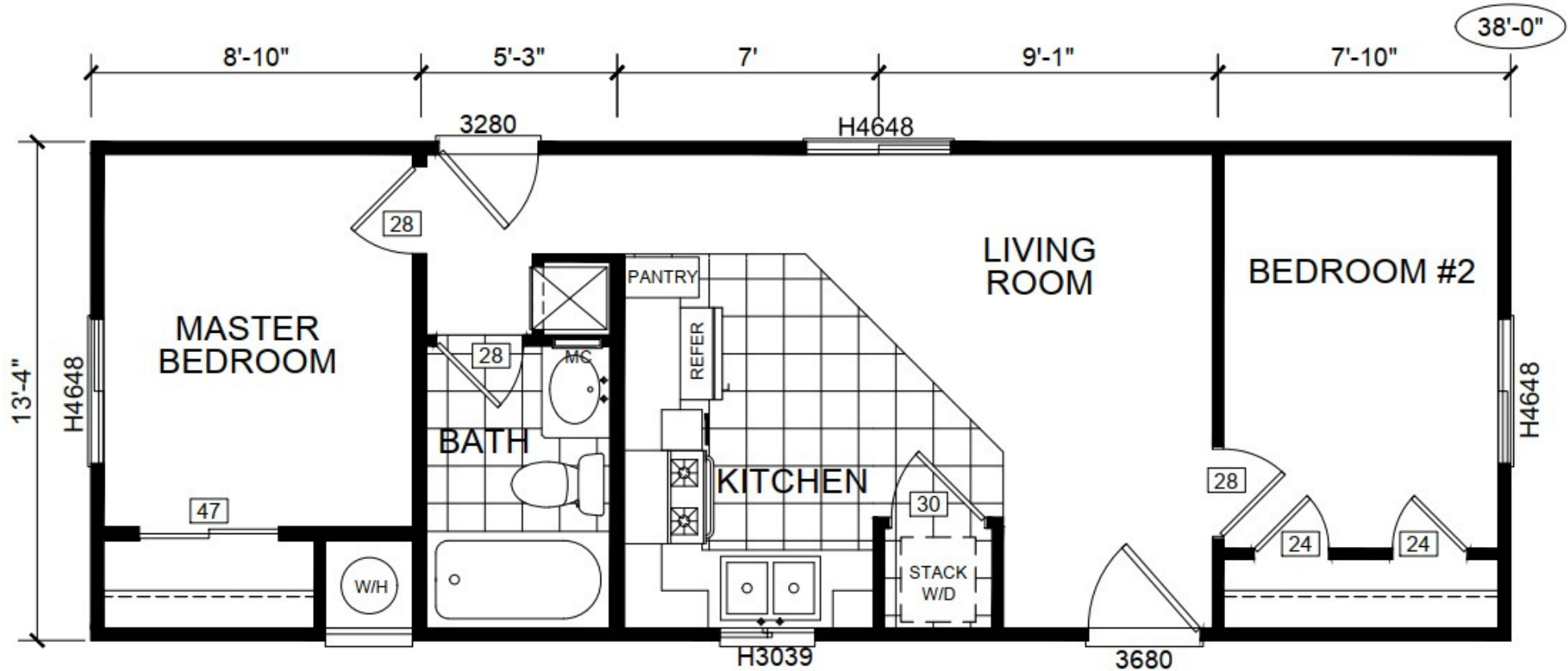


CRESTLINE



\$189,058
38 x 14 - 507 sq ft
2bed / 1bath

CL 507

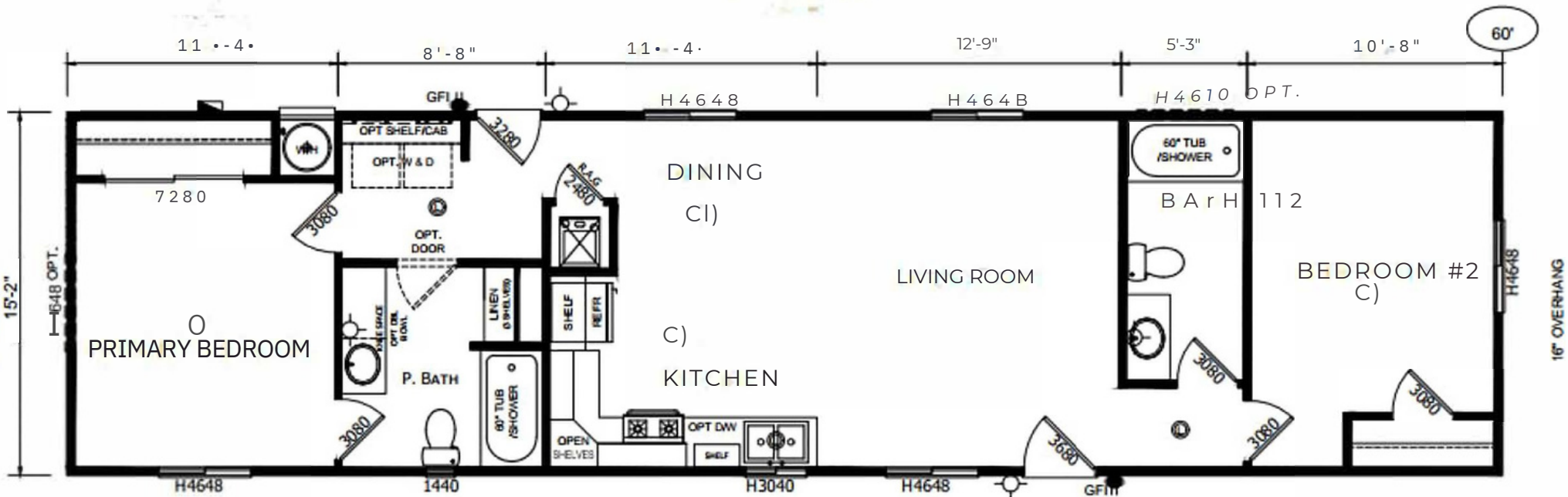


SUMMITLINE



SL 910

\$189,058
60 x 15 - 910 sq ft
2bed / 2bath



2" EAVES
 AWNING COMPLETION

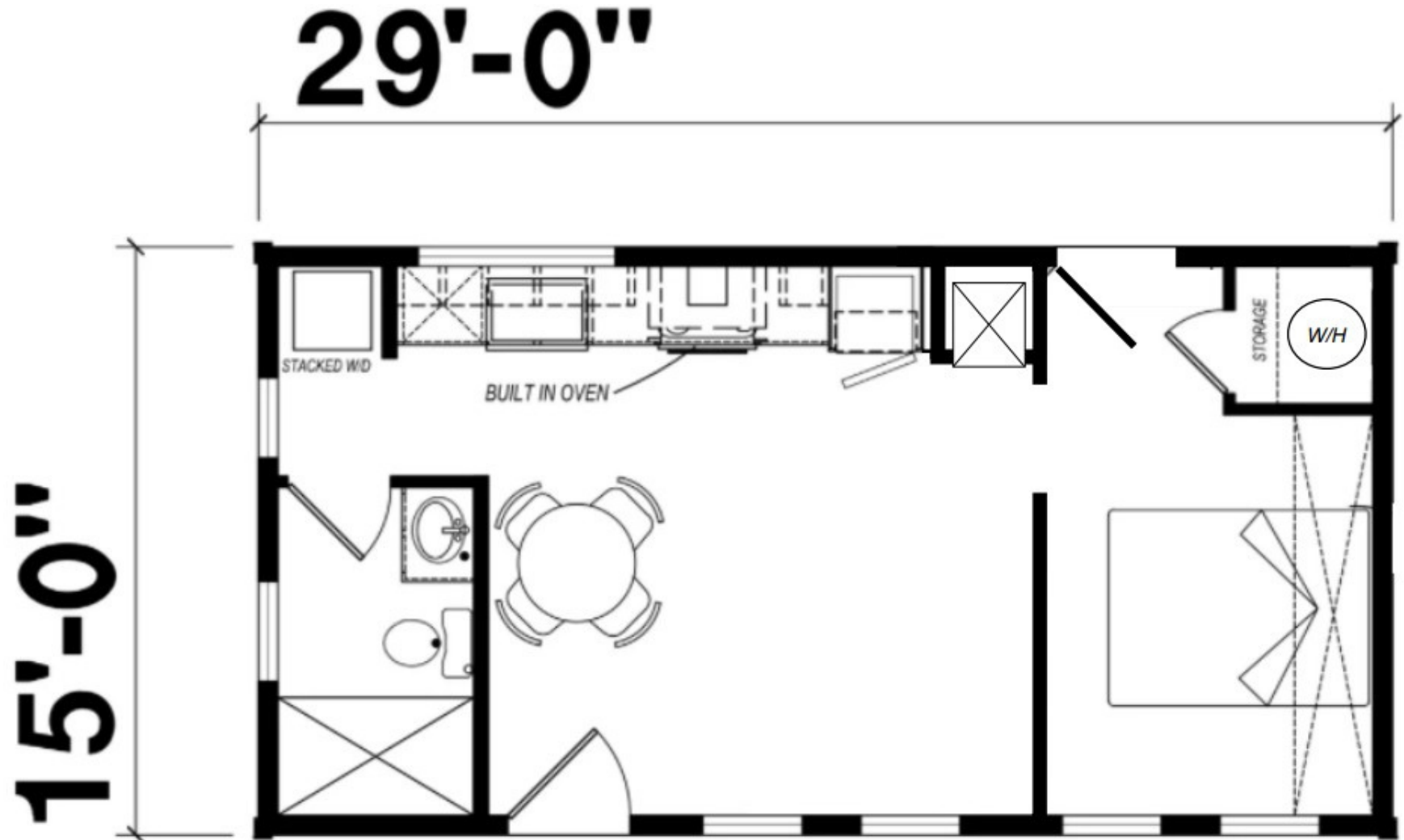
- 2 x 4 EXTERIOR WALLS
- 8' R.A.T CEILINGS THROUGHOUT
- AWNING COMPLETE

URBANLINE



\$200,725
29 x 15 - 435 sq ft
1bed / 1bath

UL 435

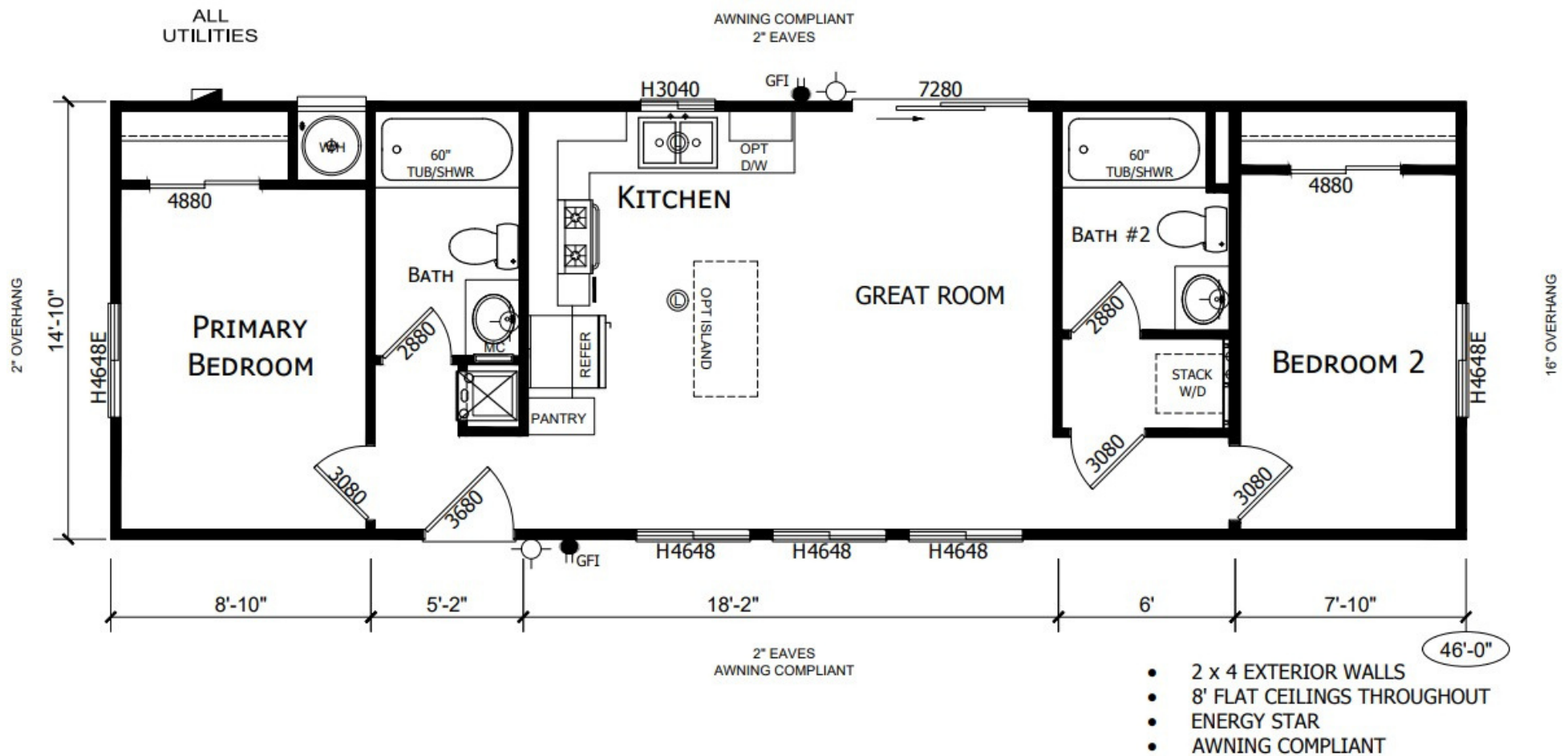


TRULINE



\$205,725
46 x 15 - 693 sq ft
2bed / 2bath

TL 693



**Return to List*

CRESTLINE

\$226,058

32 x 24 - 757 sq ft

2bed / 1bath



CL 757 - 90



CRESTLINE

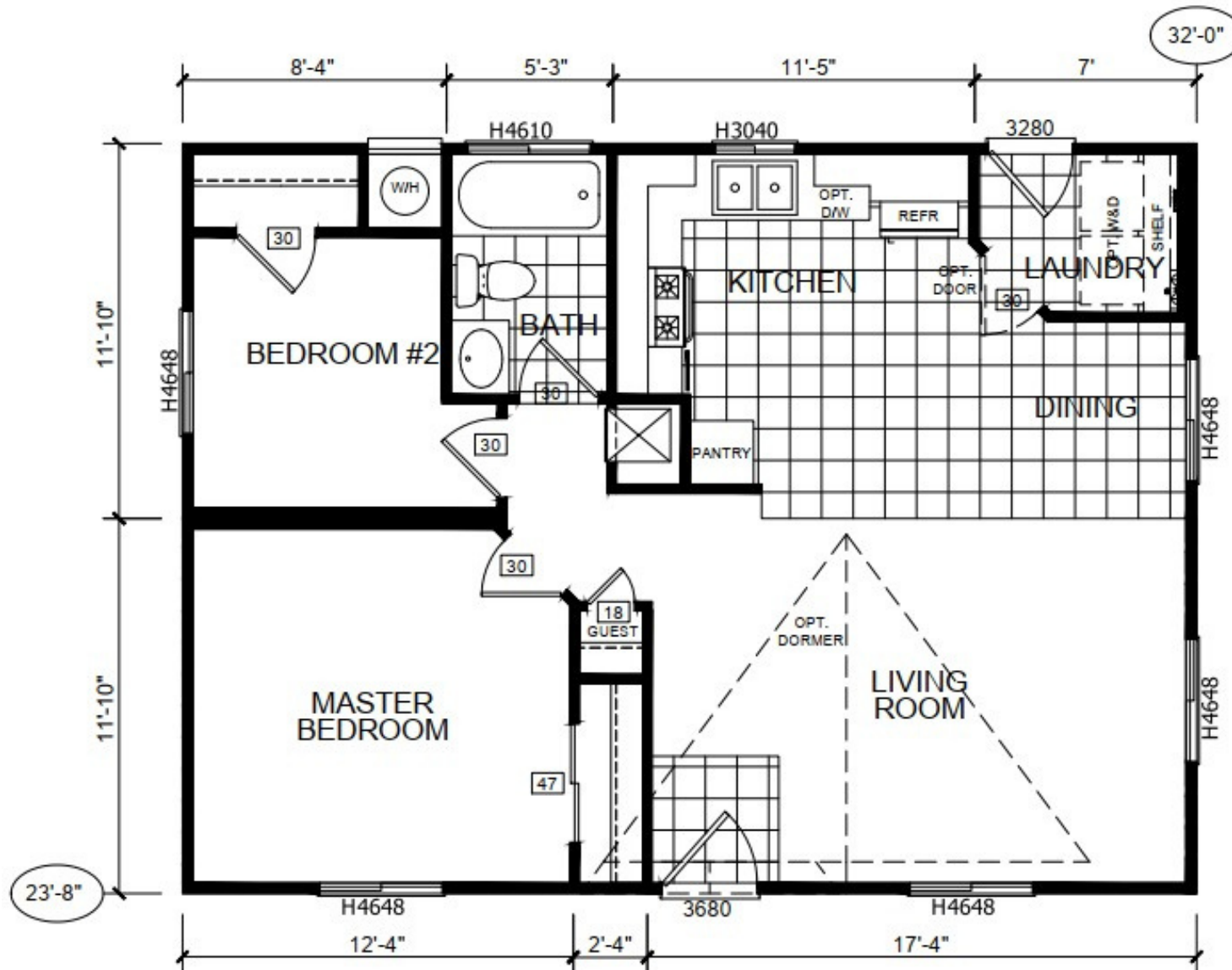
\$229,391

32 x 24 - 757 sq ft

2bed / 1bath



CL 757 -02



URBANLINE

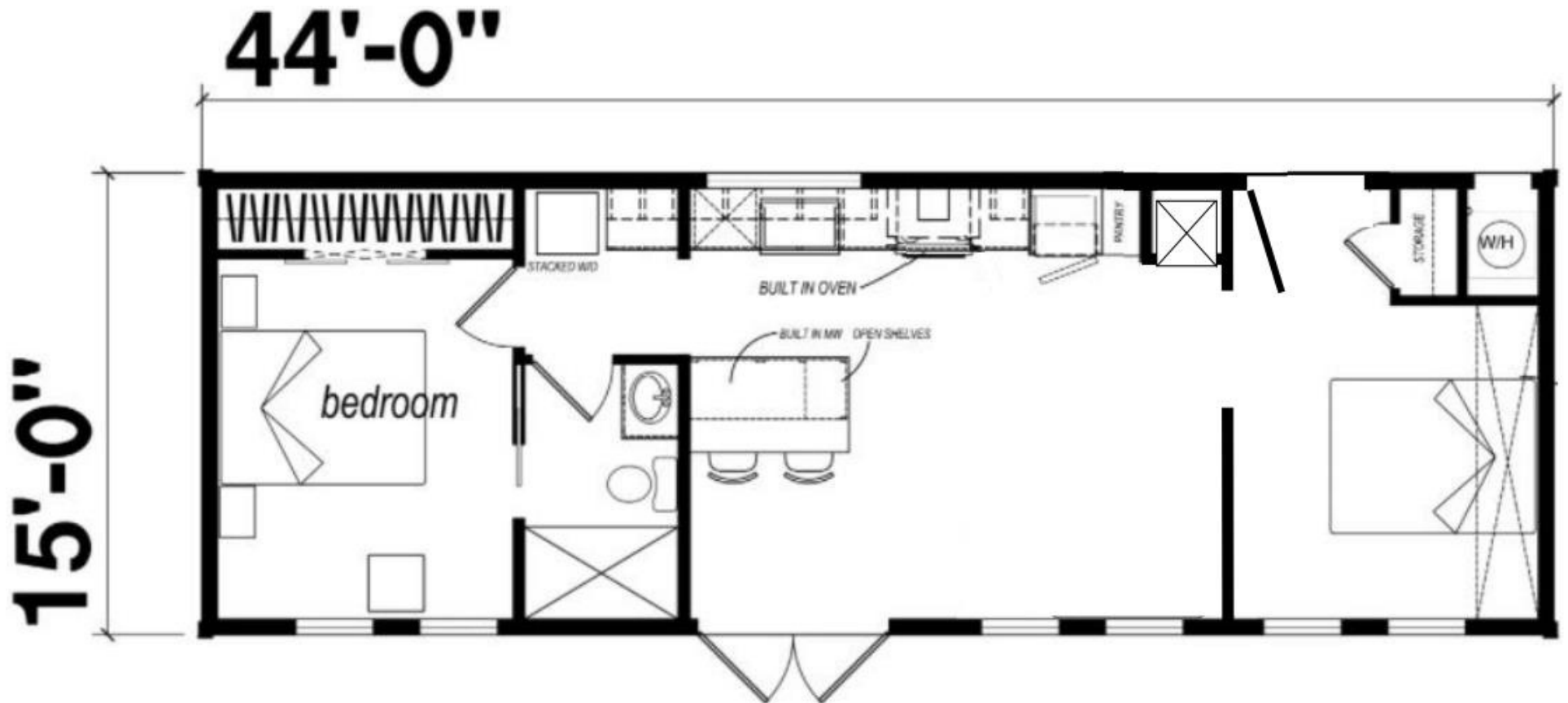
\$219,058

44 x 15 - 660 sq ft

2bed / 1bath



UL 660

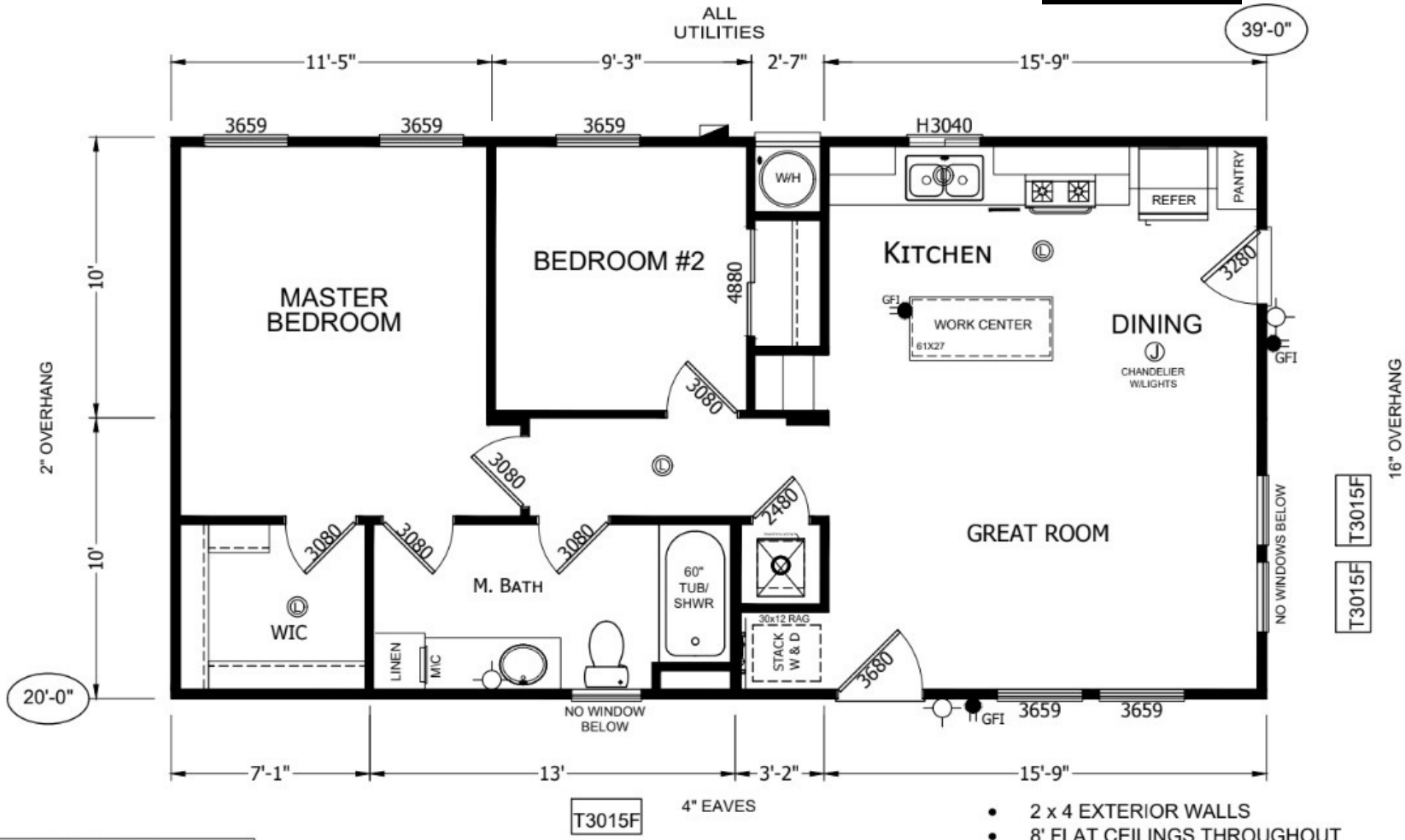


URBANLINE



\$219,058
39 x 20 - 788 sq ft
2bed / 1bath

UL 788



CRESTLINE

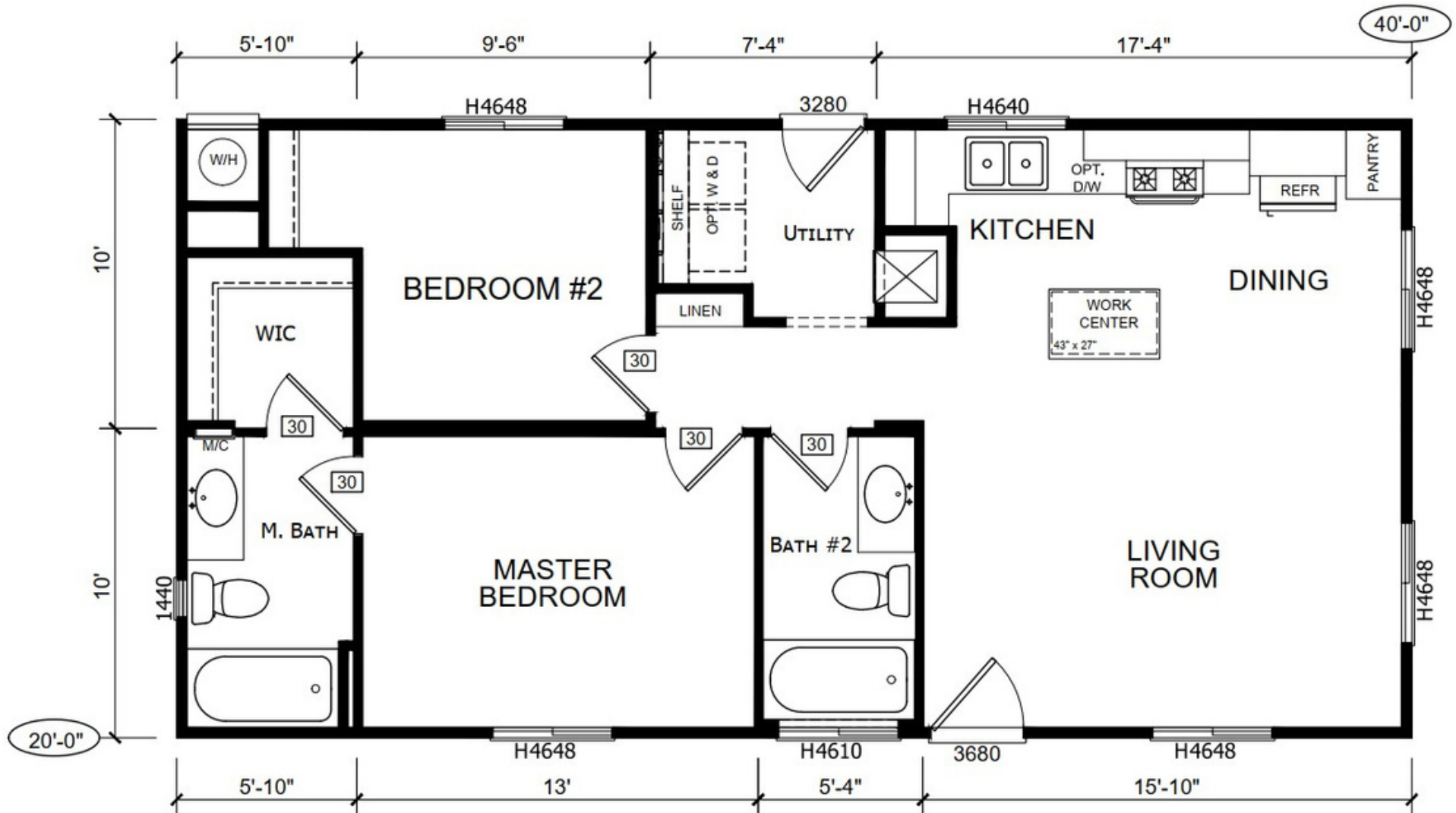
\$236,058

40 x 20 - 800 sq ft

2bed / 2bath



CL 800

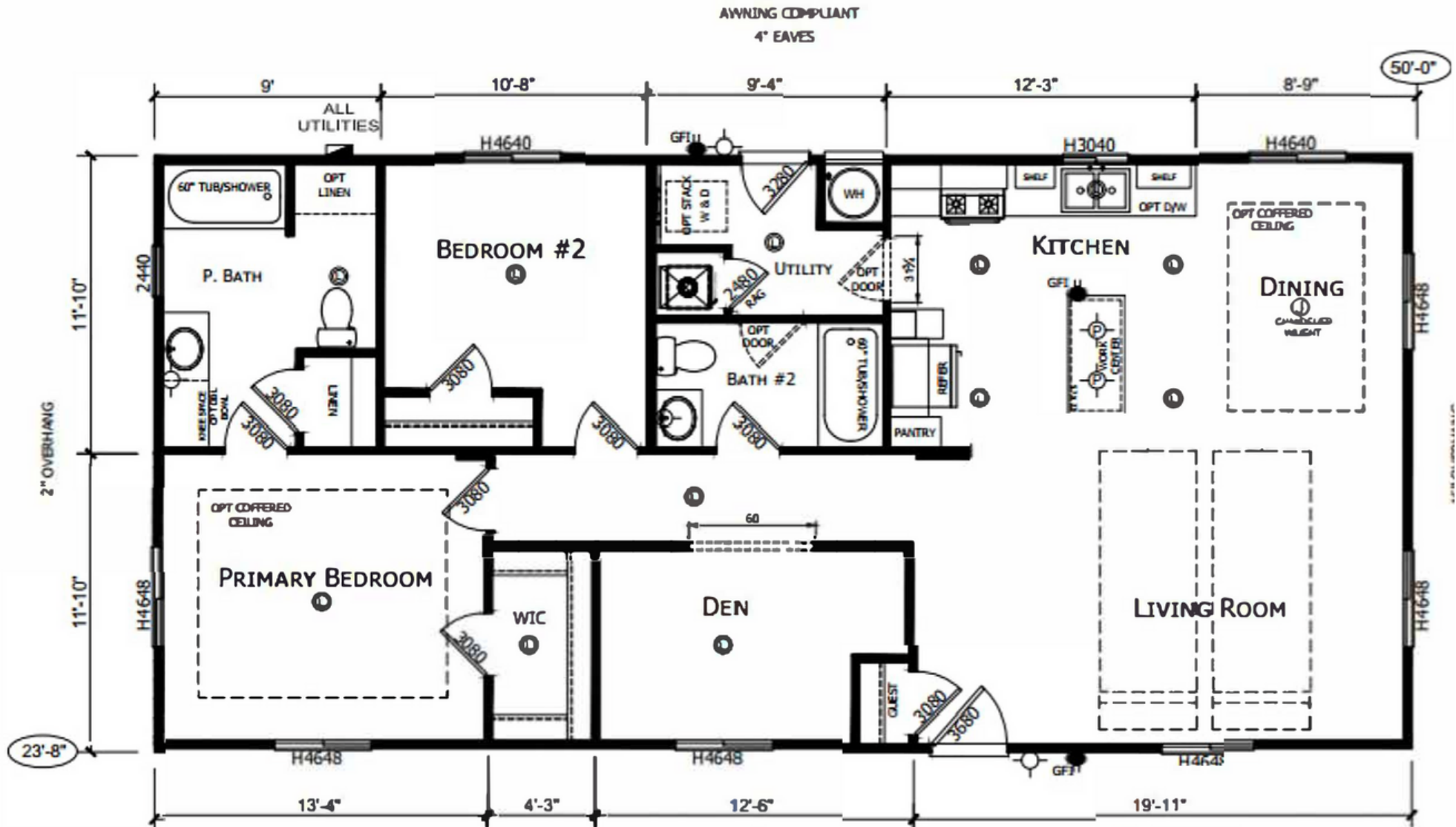


SUMMITLINE



\$237,725
50 x 24 - 1183 sq ft
3bed / 2bath

SL 1183



CRESTLINE

\$257,725

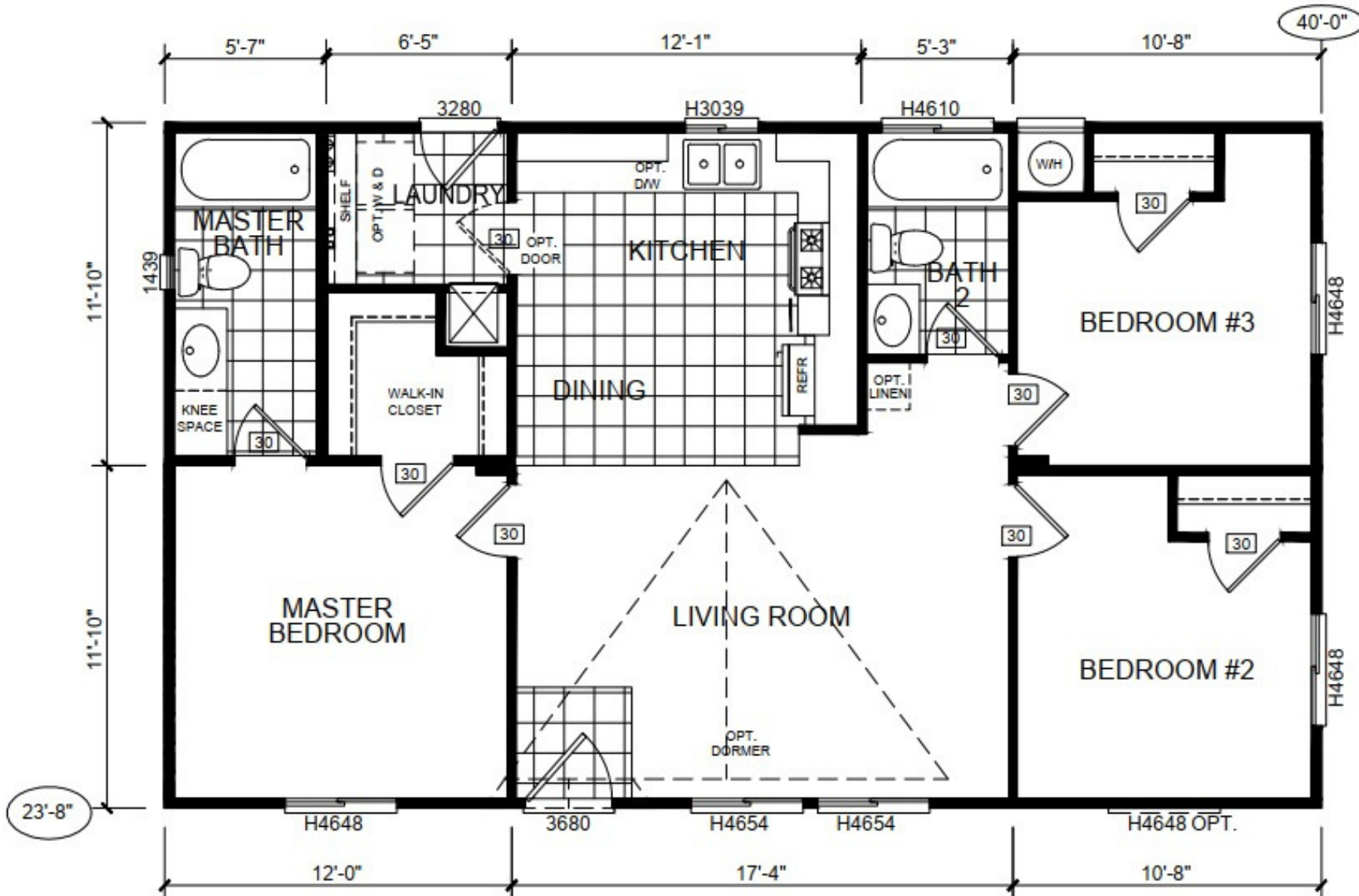
40 x 24 - 946 sq ft

3bed / 2bath

(Available in 24' or 27')



CL 946



URBANLINE

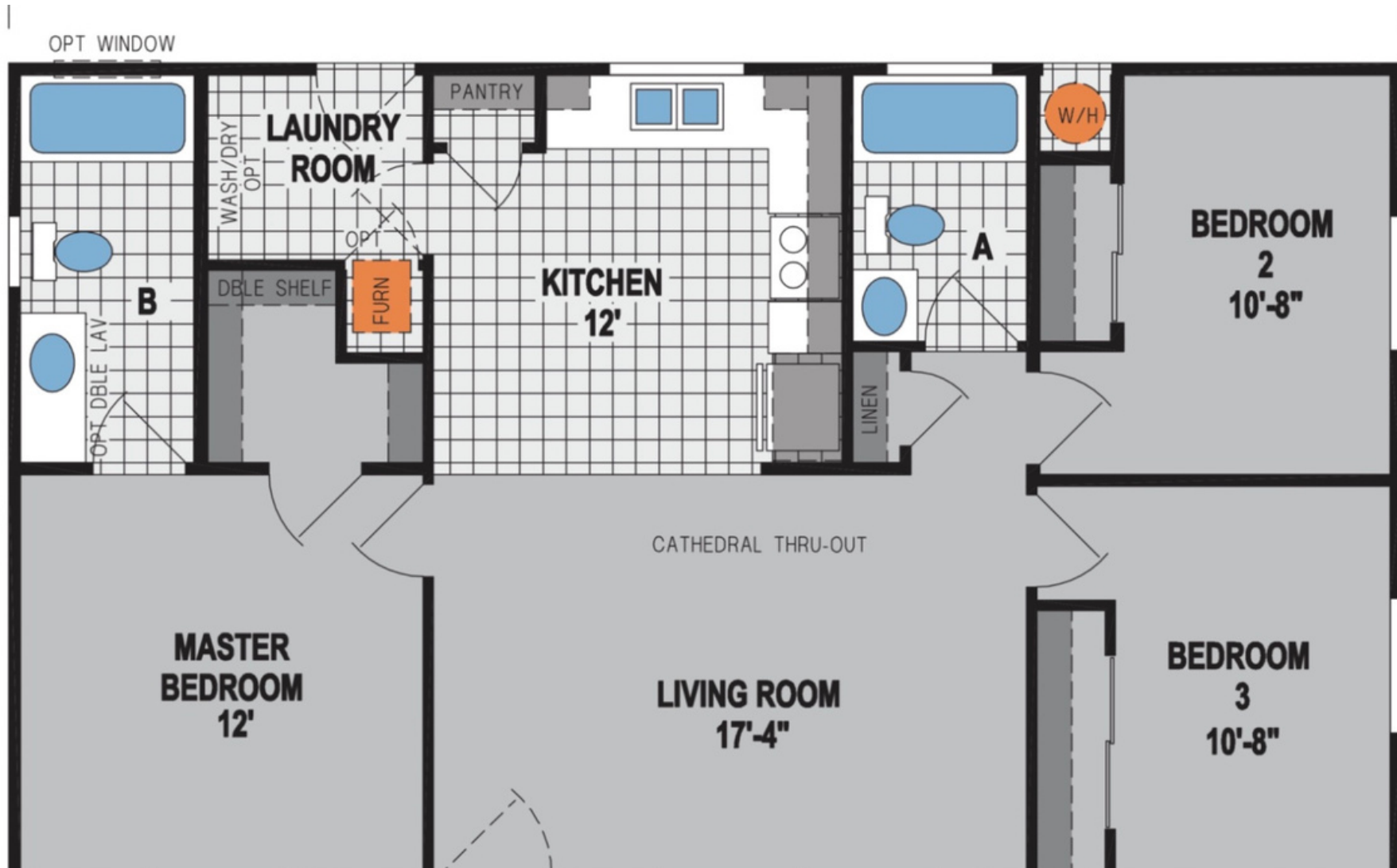


UL946

\$257,725

40 x 24 - 946 sq ft

3bed / 2bath



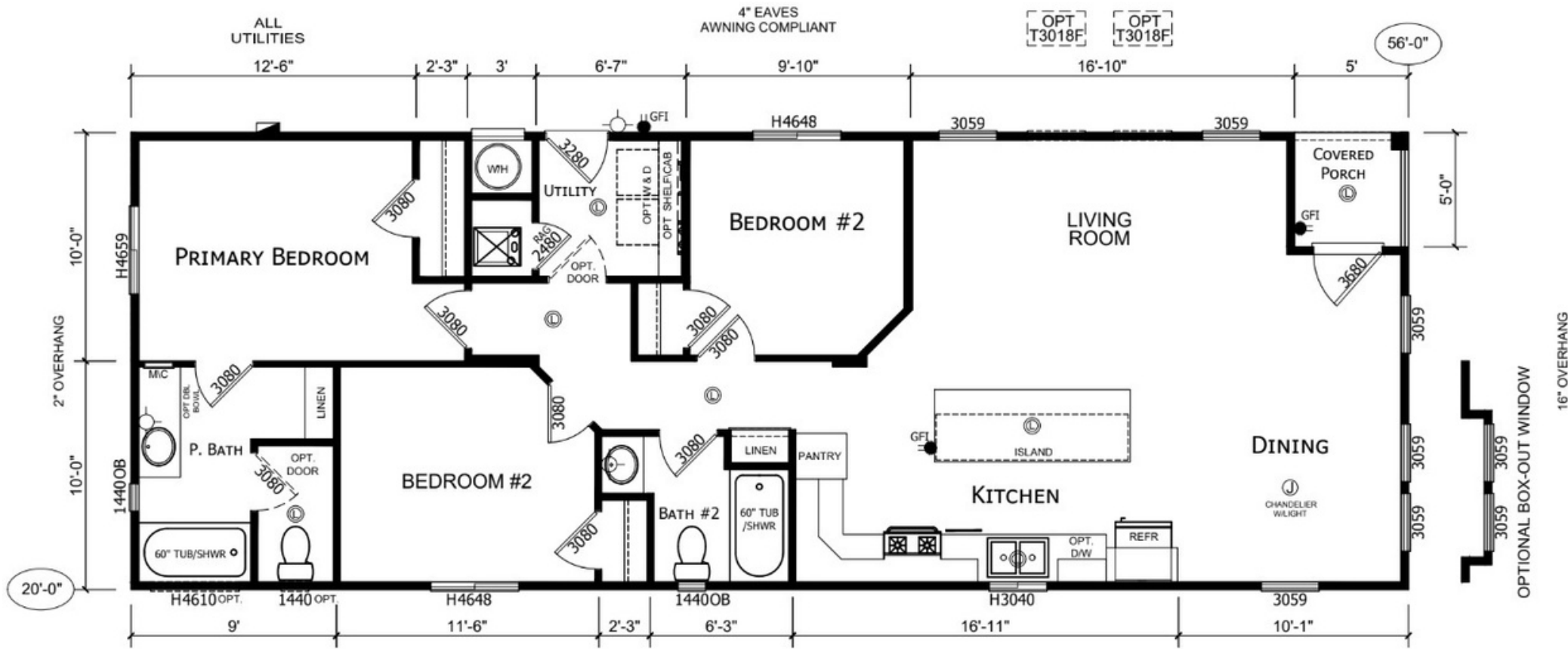
TRULINE



\$262,725
56 x 20 - 1120 sq ft
3bed / 2bath

TL 1120

BEDROOM #3



4" EAVES
 AWNING COMPLIANT

- 2 x 4 EXTERIOR WALLS
- 8' FLAT CEILINGS THROUGHOUT

OPTIONAL BOX-OUT WINDOW
 16" OVERHANG

CRESTLINE

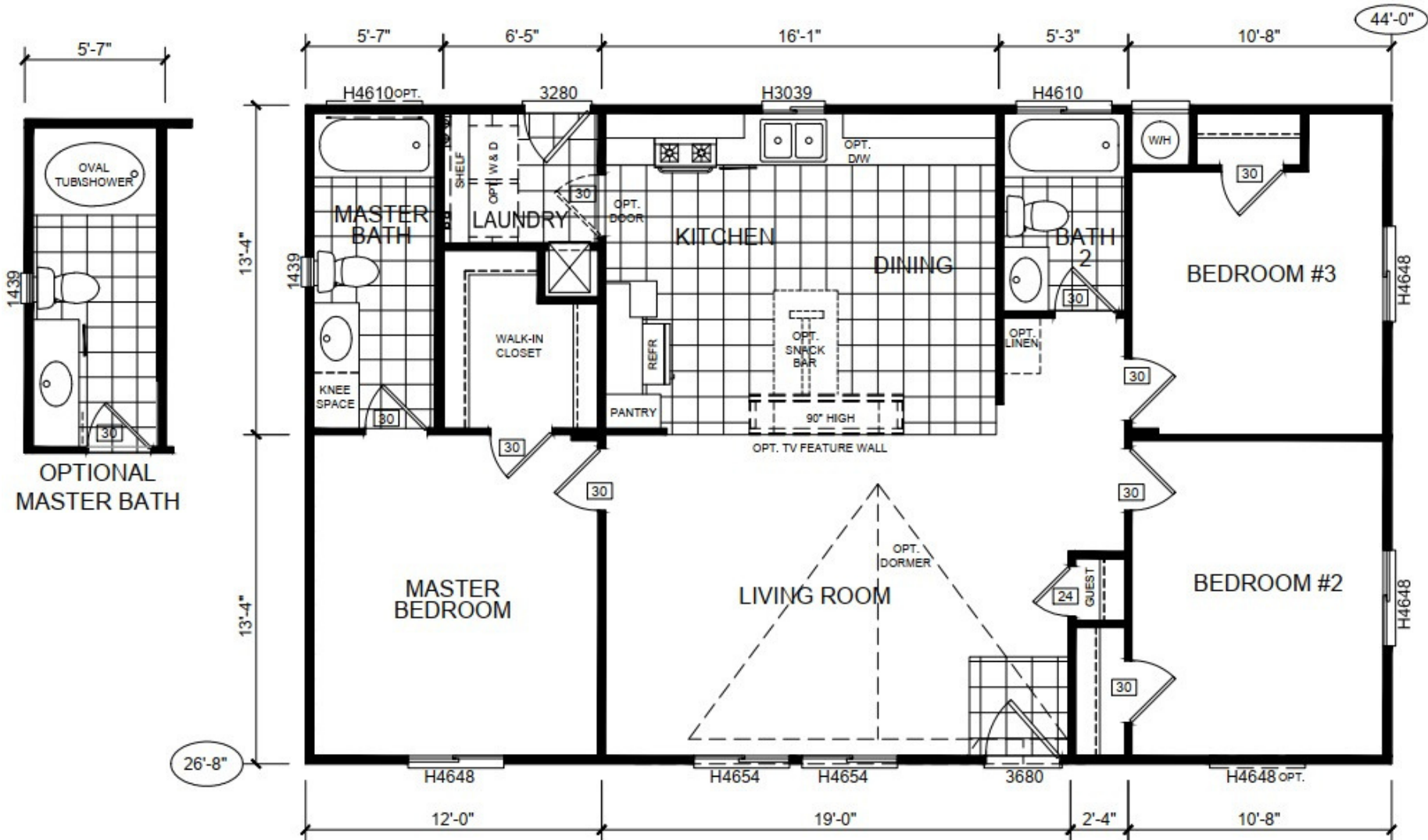


\$274,391

44 x 24 - 1041 sq ft
3bed / 2bath

(Available in 24' or 27')

CL 1041



CRESTLINE

\$274,391

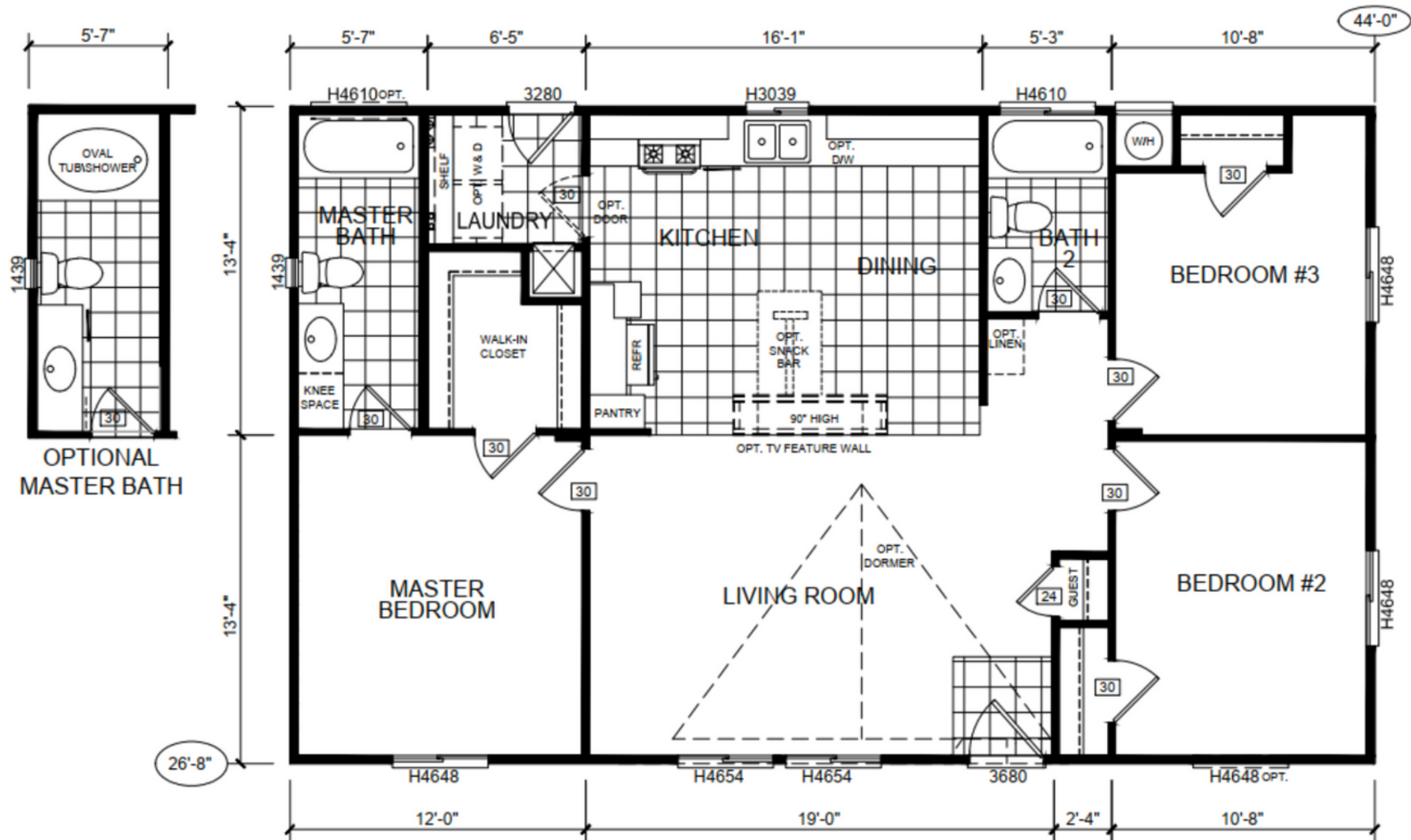
44 x 27 - 1173 sq ft

3bed / 2bath

(Available in 24' or 27')



CL 1173-04



CRESTLINE

\$276,058

46 x 24 - 1173 sq ft

3bed / 2bath

(Available in 44' or 46')



CL 1173-05

